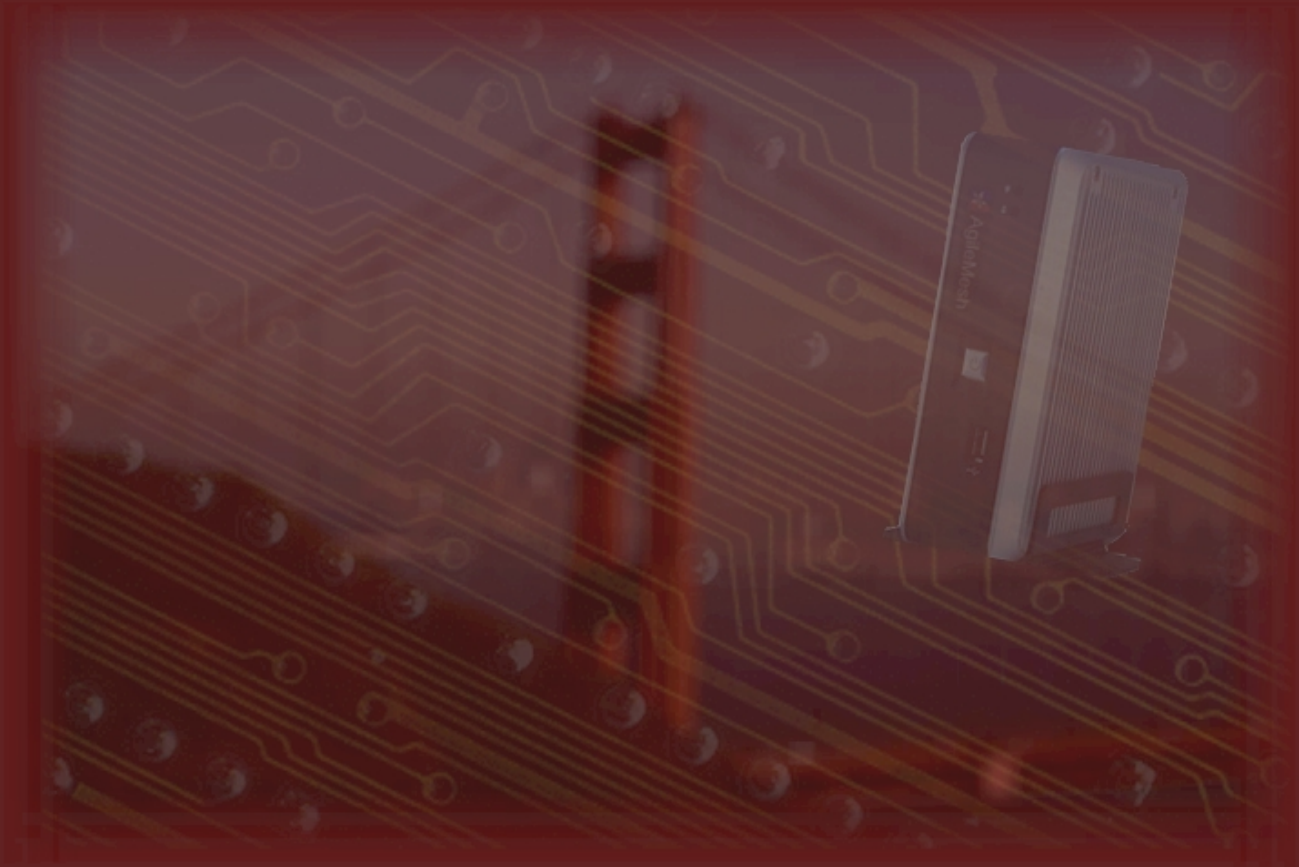


# VIDEO NETWORK BRIDGE



Our Video Network Bridge is designed to extend the reach of AgileMesh portable video surveillance systems by creating a seamless bridge between our wireless mesh video networks and existing LAN/WAN networks. Using the latest in wireless networking technologies, AgileMesh systems enable emergency response squads, SWAT units, Hazmat teams, VIP protection details and event operators to acquire 360-degree visibility into their areas of interest. And they are able to do so securely, requiring no expertise in complex networking concepts or terminology.



## The Network Bridge

Designed for extending an AgileMesh wireless incident area network ("IAN") to broader fixed networks (LAN/WAN). This facilitates the sharing of video feeds from the AgileMesh IAN with stations connected to the existing LAN/WAN network.

The AgileMesh Network Bridge (AV3000) is a self-configuring appliance that serves as a plug-and-play transport bridge between AgileMesh's wireless networks and other in-place wired or wireless networks (LAN/WAN). The AgileMesh network is created "out of the box" using our rapidly deployable video nodes, which host multiple IP and analog video cameras. The plug-and-play aspect of the AV3000 network bridge relates to the ease with which it can be connected to both networks via standard network cables and the automatic discovery of the video sources on the AgileMesh network for mapping across the bridge between the networks.

## Features

- Automated discovery of video sources
- DHCP server on the AgileMesh network
- Automated self-configuration for routing between networks
- Algorithmic mapping of video source IP addresses to LAN/WAN network ports
- Can accept static or dynamic LAN/WAN network addresses
- Replication of video streams toward the LAN/WAN to minimize loading on the wireless mesh network
- Automatic DDNS setup based on video source names
- User-optional one-to-one manual remapping of IP addresses between the AgileMesh network and other LAN/WAN networks
- Automatic port forwarding for AgileMesh network IP addresses assigned via DHCP
- Automatic dynamic web page generation with video thumbnail images to make identification and selection of video sources easy

## Specifications

### Model Number

- AV3000

### Standards

- IEEE 802.3 Ethernet (10BaseT)
- IEEE 802.3u Ethernet (100BaseTX)

### Device Management

- Web-Based Internet Explorer v6 or later
- Microsoft Windows (all versions)
- DHCP Server and Client
- AgileMesh video discovery

### Ports (Used)

- 2 Ethernet 10/100 BaseTX

### Ports (Factory Use Only)

- One PS/2 Keyboard port
- One PS/2 Mouse port
- One Parallel Printer port
- One VGA port
- Two USB 2.0 ports
- One Microphone in audio port
- One Line out audio port

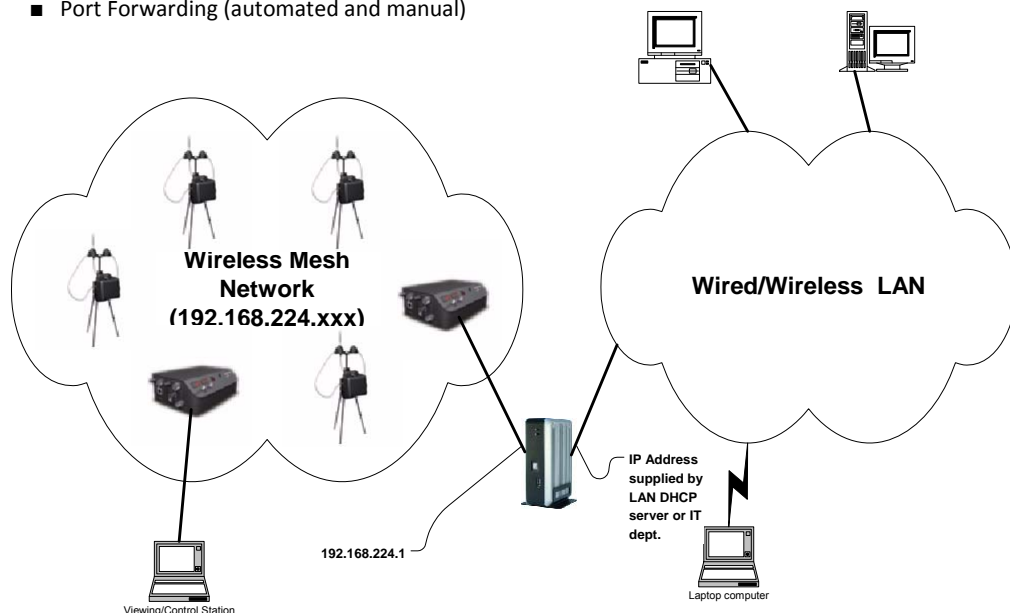
### Network Protocols

- TCP/IP v4
- NAT (Network Address Translation)
- Port Forwarding (automated and manual)

## Environmental

### Dimensions

- Dimensions: 170 x 123 x 56mm (6.69 x 4.84 x 2.20 inches)
- Weight: 780g (27.5 oz)
- Power Input: External 5V-5.25V DC @ 4A
- Operating Temperature: 0-60 Degrees C
- Operating Humidity: 0-90% relative humidity, non-condensing
- Certifications: FCC/CE



1130 E. Arapaho, Suite 565  
 Richardson, TX 75081  
 Phone: +1 972-231-2122  
 Fax: +1 972-231-2406  
 Email: info@agilemesh.com

 **AgileMesh**  
[www.agilemesh.com](http://www.agilemesh.com)